

# Area 31

## Fall Contest 2010



### We are the Champions!

## Humorous Speech & Evaluation Contest

### Siemens

1401 Nolan Ryan Expressway (see map, p. 2)  
Arlington, TX 76011

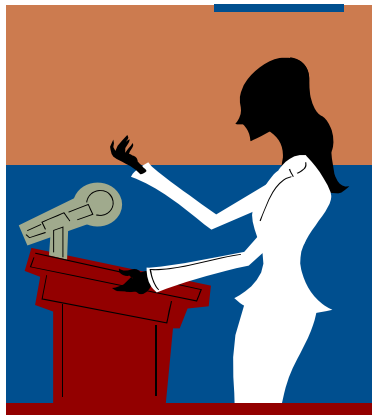
September 23, 2010 (Thursday)

6:30 p.m. – Briefing\*

7:00 p.m. – Contest

\* Mandatory for contestants, judges and helpers

To volunteer or for information, contact Shannon Hills at  
[shannonhills@sbcglobal.net](mailto:shannonhills@sbcglobal.net) or (214) 552-5513.



# MAP TO SIEMENS CONTEST FACILITY:

